



Hatco[®]
We keep your wheels rolling

WHEEL BALANCING WEIGHTS



CERTIFICATE

The TÜV CERT Certification Body
of TÜV Rheinland Industrie Service GmbH

certifies in accordance with
TÜV CERT procedures that

HATCO LTD.
DORA HIGHWAY
P. O. BOX 80 - 269
BEIRUT - LEBANON

has established and applies a quality management system for

**MANUFACTURING OF WHEEL BALANCING WEIGHTS FOR
PASSENGER CARS, TRUCKS AND MOTORCYCLES
MANUFACTURING OF TIRE REPAIR MATERIALS MADE OF RUBBER
TRADING OF TIRE TOOLS AND ACCESSORIES**

An audit was performed, Report No. 041313.

Proof has been furnished that the requirements according to

DIN EN ISO 9001:2000

are fulfilled.

The certificate is valid until **2009-04-05**.
Certificate Registration No. **01 100 041313**



Toman
TÜV CERT Certification Body of
TÜV Rheinland Industrie Service
GmbH

Cologne, 2006-04-06



TÜV Rheinland Group

www.tuv.com

Since 1984 Hatco has grown to become one of the most prominent tire repair and consumables manufacturers. One of its kind in Lebanon, and via continuous development for best quality, Hatco aims "at becoming a global leader in manufacturing, marketing, and distributing tire repair materials, tools and accessories that keep wheels rolling".

Originally Hatco concentrated on wheel balancing weights manufacturing; however, it soon developed and deployed the latest technological resources to add a full range of high quality tire repair material such as patches and chemicals to its production lines.

Through determination to succeed, and believing that keys of success are Hard work, Quality and improvement, Hatco thrived to turn itself into a World leading manufacturer of tire repair business.

In this booklet you will find the full range of Hatco wheel balancing weights, the prelude Hatco product.

Since the early 80's, Hatco manufactures wheel balancing weights of the highest quality for all types of vehicles, from motorcycles to heavy trucks, and all types of rims, from American to Japanese whether steel or alloy. To ensure the rim's protection, Hatco also provides plastic coated weights. This plastic coating provides protection against corrosion and oxidation. Hatco's range of weights also includes a line of adhesive weights which can be used for all types of rims and vehicles.

Hatco's policy of keeping up with international standards of production is not only limited to manufacturing, but also to the preservation of the environment. Hatco is one of the pioneering companies worldwide that started manufacturing zinc-made wheel balancing weights that are environment friendly. It adopted this strategic decision after taking into account a recent EU regulation (DIRECTIVE 2000/53/EC), which stipulates the substitution of all lead-made products with zinc.

We keep your wheels rolling





	ZINC BALANCING WEIGHTS FOR CARS	2 - 5
	STEEL BALANCING WEIGHTS FOR CARS	6 - 7
	LEAD BALANCING WEIGHTS FOR CARS	8 - 13
	WEIGHTS FOR TRUCKS	14 - 16
	WEIGHTS FOR MOTORCYCLES	17 - 18
	AMERICAN BALANCING WEIGHTS FOR CARS	19 - 21
	TOOLS	22
	TECHNICAL DATA FOR ADHESIVE WEIGHT APPLICATION	23
	PACKAGING	24



Hatco®

We keep your wheels rolling

W



ZINC BALANCE WEIGHTS

ZINC WEIGHTS FOR PASSANGER CARS



TYPE ZN01

Plastic coated Zinc universal balance weight that can be mounted on all steel rims.

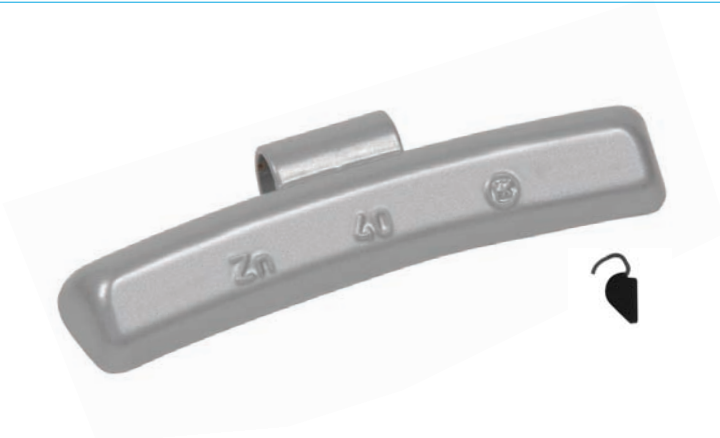
SIZE in GR	Box Qty
5, 10, 15, 20, 25, 30	100
35, 40, 45, 50, 55, 60	50



TYPE ZN03

Plastic coated Zinc balance weight used for French steel rims.

SIZE in GR	Box Qty
5, 10, 15, 20, 25, 30	100
35, 40, 45, 50	50



TYPE ZN04

Plastic coated Zinc balance weight that can be applied to most alloy rims.

SIZE in GR	Box Qty
5, 10, 15, 20, 25, 30	100
35, 40, 45, 50	50



TYPE ZN05

Plastic coated Zinc balance weight that can be applied to most Japanese alloy rims.

SIZE in GR	Box Qty
5, 10, 15, 20, 25, 30	100
35, 40, 45, 50	50

ZINC WEIGHTS FOR PASSANGER CARS



TYPE ZN060

Plastic coated universal zinc adhesive weight individually seperable with blue tape. 3x5gr and 3x10gr segments.

Dimension:Height 5.5mm x Width 15mm

SIZE in GR	Box Qty
45	100



TYPE ZN061

Plastic coated universal zinc adhesive weight individually seperable with blue tape. 3x5gr and 3x10gr segments

Dimension:Height 4.8mm x Width 19mm

SIZE in GR	Box Qty
45	100



TYPE ZN063

Plastic coated slim universal zinc adhesive weight individually seperable with blue tape. 3x5gr and 3x10gr segments.

Dimension:Height 3.8mm x Width 19mm

SIZE in GR	Box Qty
45	50

ZINC WEIGHTS FOR PASSANGER CARS



TYPE ZN065

Plastic coated slim zinc adhesive weight individually seperable with blue tape. 7x5gr segments.

Dimension:Height 3.8mm x Width 19mm

SIZE in GR	Box Qty
35	100

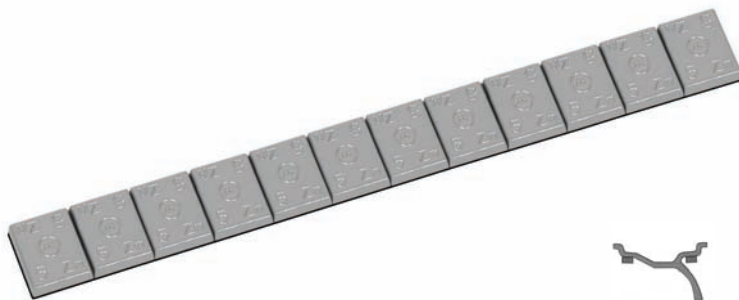


TYPE ZN066

Plastic coated super slim universal zinc adhesive weight individually seperable with blue tape. 4x2.5gr and 4x5gr segments

Dimension:Height 2.8mm x Width 19mm

SIZE in GR	Box Qty
30	50



TYPE ZN067

Universal zinc adhesives weight individually separable with blue tape. 12x5gr segments. zinc plated finish

Dimesnion: Height 4mm x Width 19mm

SIZE in GR	Box Qty
60	100



TYPE ZN067R

Universal zinc adhesives weight on roll individually separable with blue tape. 1200x5gr segments .zinc plated finish

Dimensnion: Height 4mm x Width 19mm

SIZE in GR	Box Qty
6kgs(1200x5grs)	1Roll/Box



Hatco[®]

We keep your wheels rolling

FF@



STEEL BALANCE WEIGHTS

STEEL WEIGHTS FOR PASSANGER CARS



TYPE FE060

Steel adhesives weight individually separable with blue tape.
12x5gr segments .zinc plated finish

Dimensin: Height 4mm x Width 19mm

SIZE in GR	Box Qty
60	100



TYPE FE060R

Steel adhesives weight on roll individually separable with blue tape.
1200x5gr segments .zinc plated finish

Dimensin: Height 4mm x Width 19mm

SIZE in GR	Box Qty
6kgs(1200x5grs)	1Roll/Box



Hatco[®]

We keep your wheels rolling

ROAD



LEAD BALANCE WEIGHTS

WEIGHTS FOR PASSANGER CARS



TYPE 01

A universal balance weight for steel rims.

SIZE in GR	Box Qty
5	200
10, 15, 20, 25, 30, 35, 40, 45	100
50, 55, 60, 65, 70, 80, 90	50
100, 110, 120	25



TYPE 01P (PLASTIC COATED)

A universal plastic coated balance weight for steel rims.

SIZE in GR	Box Qty
5, 10, 15, 20, 25, 30, 35, 40, 45	100
50, 55, 60	50



TYPE 02

This shape have been used for steel rims by OPEL and BMW

SIZE in GR	Box Qty
10, 15, 20, 25, 30, 35, 40, 45	100
50, 55, 60	50



TYPE 03

Universal weight for steel wheels used for French rims.

SIZE in GR	Box Qty
5, 10, 15, 20, 25, 30, 35, 40, 45	100
50, 55, 60	50

WEIGHTS FOR PASSANGER CARS



TYPE 04

Balance weight for alloy rims.

SIZE in GR	Box Qty
5, 10, 15, 20, 25, 30, 35, 40, 45	100
50, 55, 60	50



TYPE 04P (PLASTIC COATED)

Plastic coated balance weight for alloy rims.

SIZE in GR	Box Qty
5, 10, 15, 20, 25, 30, 35, 40, 45	100
50, 55, 60	50



TYPE 05

Balance weight for Japanese alloy rims mostly Nissan and Toyota.

SIZE in GR	Box Qty
5, 10, 15, 20, 25, 30, 35, 40, 45	100
50, 55, 60	50



TYPE 05P (PLASTIC COATED)

Plastic coated balance weight for Japanese alloy rims mostly Nissan and Toyota.

SIZE in GR	Box Qty
5, 10, 15, 20, 25, 30, 35, 40, 45	50
50, 55, 60	25

WEIGHTS FOR PASSANGER CARS



TYPE 020

Weight for OEM Audi and VW steel rims

SIZE in GR	Box Qty
10, 15, 20, 25, 30, 35, 40, 45	100
50, 55, 60	50



TYPE 020P (PLASTIC COATED)

Plastic coated weight for OEM Audi and VW alloy rims

SIZE in GR	Box Qty
10, 15, 20, 25, 30	50
35, 40, 45, 50, 55, 60	25



TYPE 021

Weight for OEM Mercedes-Benz steel rims

SIZE in GR	Box Qty
10, 15, 20, 25, 30, 35, 40, 45	100
50, 55, 60	50

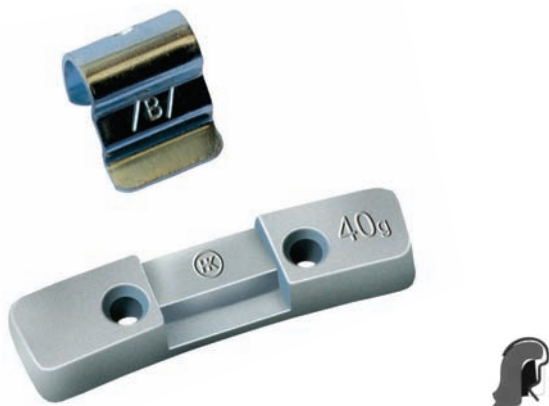


TYPE 021P (PLASTIC COATED)

Plastic coated weight for OEM Mercedes-Benz for alloy rims

SIZE in GR	Box Qty
10, 15, 20, 25, 30	50
35, 40, 45, 50, 55, 60	25

WEIGHTS FOR PASSANGER CARS



TYPE 022

Weight for OEM BMW steel rims

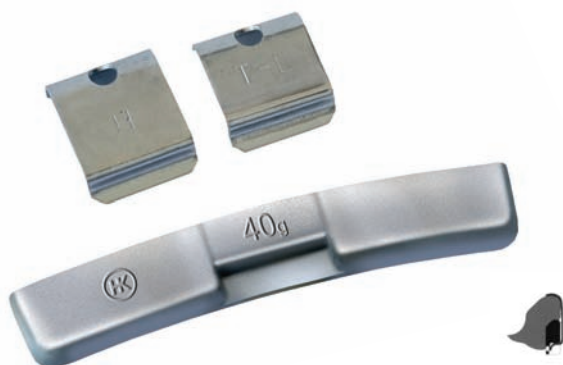
SIZE in GR	Box Qty
10, 15, 20, 25, 30, 35, 40, 45	100
50, 55, 60	50



TYPE 022P (PLASTIC COATED)

Plastic coated weight for OEM BMW for alloy rims

SIZE in GR	Box Qty
10, 15, 20, 25, 30	50
35, 40, 45, 50, 55, 60	25



TYPE 023

Weight for French alloy rims, can be assembled with H or Tral clips

SIZE in GR	Box Qty
10, 15, 20, 25, 30, 35, 40, 45	100
50, 55, 60	50



TYPE 023P (PLASTIC COATED)

Plastic coated weight for French alloy rims, can be assembled with H or Tral clips

SIZE in GR	Box Qty
10, 15, 20, 25, 30	50
35, 40, 45, 50, 55, 60	25

WEIGHTS FOR PASSANGER CARS



TYPE 06

Universal adhesive weight with blue tape, 4x5gr and 4x10gr segments.
Dimension: Height 4.8 mm x width 15 mm

SIZE in GR	Box Qty
60	100



TYPE 06F

Slim adhesive weight with blue tape. Overall height 4mm. 4x5gr and 4x10gr segments
Dimension: Height 3.8 mm x width 19 mm

SIZE in GR	Box Qty
60	100



TYPE 063

Ultra slim adhesive weight with blue tape 12 x 2.5gr segments
Dimension: Height 2.8 mm x width 15 mm

SIZE in GR	Box Qty
30	100



TYPE 080P (PLASTIC COATED)

Plastic coated adhesive weight for passenger cars.

SIZE in GR	Box Qty
5, 10, 15, 20, 25, 30, 35	50
40, 45, 50, 55, 60	25

WEIGHTS FOR TRUCKS



TYPE 010

Truck weights used for tubeless rims suitable for sizes 22.50x6.75" to 26.50x12".

SIZE in GR	Box Qty
50, 75, 100, 150	20
200, 250, 300, 350, 400	10



TYPE 011

Truck weights used for tube type rims

SIZE in GR	Box Qty
50, 75, 100, 150	20
200, 250, 300, 350, 400	10



TYPE 013

Weights used for light trucks

SIZE in GR	Box Qty
30, 50, 75, 100, 125, 150, 200	20

WEIGHTS FOR TRUCKS



TYPE 030P (PLASTIC COATED)

Plastic coated weight for ALCOA wheels (external use). Clip type "ALC"

SIZE in GR	Box Qty
75, 100, 125	10



TYPE 031P (PLASTIC COATED)

Plastic coated weight for ALCOA wheels (internal use). Clip type "ALC"

SIZE in GR	Box Qty
75, 100, 125	10



TYPE 070

Adhesive weight for truck with blue tape.
4x50gr segments
Dimension: Height 12.5 mm x width 19 mm

SIZE in GR	Box Qty
200	20

WEIGHTS FOR TRUCKS



TYPE 071

Adhesive weight for truck with blue tape.
4x25gr segments
Dimension: Height 6 mm x width 19 mm

SIZE in GR	Box Qty
100	50



TYPE 081

Adhesive weight for truck alloy rims.

SIZE in GR	Box Qty
50, 75, 100, 150	20
200, 250, 300	10



TYPE 081P (PLASTIC COATED)

Plastic coated adhesive weight for truck alloy rims.

SIZE in GR	Box Qty
50, 75, 100, 150	20
200, 250, 300	10

WEIGHTS FOR MOTORCYCLE



TYPE 040

Weight for motorcycle alloy rims with center rib <10mm

SIZE in GR	Box Qty
10, 15, 20, 25, 30	50



TYPE 040P (PLASTIC COATED)

Plastic coated weight for motorcycle alloy rims with center rib <10mm

SIZE in GR	Box Qty
10, 15, 20, 25, 30	50



TYPE 041

Weight for motorcycle alloy rims with center rib >10mm

SIZE in GR	Box Qty
10, 15, 20, 25, 30	50



TYPE 041P (PLASTIC COATED)

Plastic coated weight for motorcycle alloy rims with center rib >10mm

SIZE in GR	Box Qty
10, 15, 20, 25, 30	50

WEIGHTS FOR MOTORCYCLE



TYPE 045

Weight for motorcycle with spoke rims with hole diameter 6.2 mm - 7 mm

SIZE in GR	Box Qty
10, 15, 20, 25, 30	100



TYPE 059

Motorcycle adhesive weight with blue tape. 7x5gr and 6x2.5gr segments. Dimension: Height 7 x width 11mm

SIZE in GR	Box Qty
50	100



Hatco[®]

We keep your wheels rolling

AD



AMERICAN BALANCE WEIGHTS

AMERICAN WEIGHTS FOR PASSANGER CARS



Steel Rims



TYPE SW PASSENGER WEIGHTS

Balance weight for steel rims to fit passenger cars, mini vans and pick-ups.

SIZE in OZ	Box Qty
0.25, 0.50	100
0.75, 1.00, 1.25, 1.50, 1.75, 2.00, 2.25, 2.50, 2.75, 3.00	50
3.25, 3.50, 3.75, 4.00	25



TYPE SWC PASSENGER WEIGHTS

Plastic coated weight for steel rims to fit passenger cars, mini vans and pick-ups.

SIZE in OZ	Box Qty
0.25, 0.50, 0.75, 1.00, 1.25, 1.50, 1.75, 2.00	25
2.25, 2.50, 2.75, 3.00, 3.25, 3.50, 3.75, 4.00	

Alloy Rims



IAW UNCOATED

Uncoated weight for most European alloy wheels.

SIZE in GR	Box Qty
5, 10, 15, 20, 25, 30, 35, 40, 45, 50, 55, 60	25



IAWC COATED

Plastic coated weight for European alloy wheels.

SIZE in GR	Box Qty
5, 10, 15, 20, 25, 30, 35, 40, 45, 50, 55, 60	25

AMERICAN WEIGHTS FOR PASSANGER CARS



Alloy Rims



FNC

Plastic coated weight for Japanese alloy wheels.

SIZE in GR	Box Qty
5, 10, 15, 20, 25, 30, 35, 40, 45, 50, 55, 60	25



MC UNCOATED

Uncoated weight for alloy rims.

SIZE in OZ	Box Qty
0.25, 0.50, 0.75, 1.00, 1.25, 1.50, 1.75, 2.00, 2.25, 2.50, 2.75, 3.00	50
	25



MCC COATED

Plastic coated weight for alloy rims.

SIZE in OZ	Box Qty
0.25, 0.50, 0.75, 1.00, 1.25, 1.50, 1.75, 2.00, 2.25, 2.50, 2.75, 3.00	50
	25



AW UNCOATED

Uncoated weight for alloy rims.

SIZE in OZ	Box Qty
0.25, 0.50, 0.75, 1.00, 1.25, 1.50, 1.75, 2.00, 2.25, 2.50, 2.75, 3.00	50
	25



AWC COATED

Plastic coated weight for alloy rims.

SIZE in OZ	Box Qty
0.25, 0.50, 0.75, 1.00, 1.25, 1.50, 1.75, 2.00, 2.25, 2.50, 2.75, 3.00	50
	25

TOOLS



Item Nr.	Description
700 1050	WHEEL WEIGHT PLIER

A tool for the fitting and removal of knock-on wheel weights.
Also suitable for cutting adhesive strip weights to size.
Using this tool on synthetic coated wheel weights may cause damage to the coating.



Item Nr.	Description
700 1051	CLIP FITTING TOOL

A specialist tool designed for the fitting of two-piece wheel weights.
This tool is used to hook and lift the clip for the insertion or removal of the weight body.



Item Nr.	Description
700 1052	ADHESIVE WEIGHT CUTTER PLIER

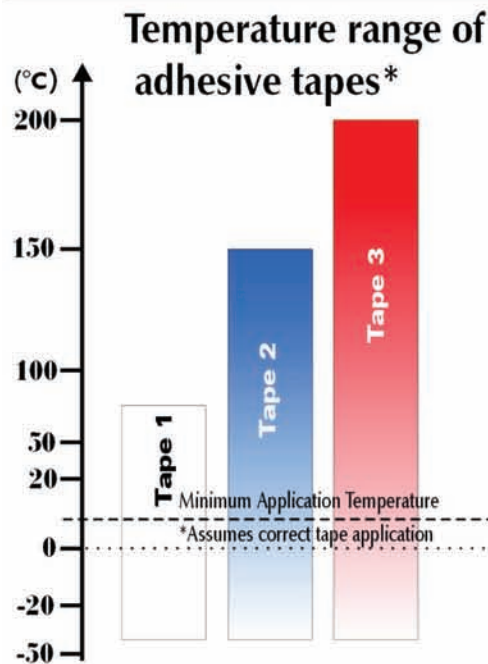
A tool for cutting easily the segments of adhesive weights.



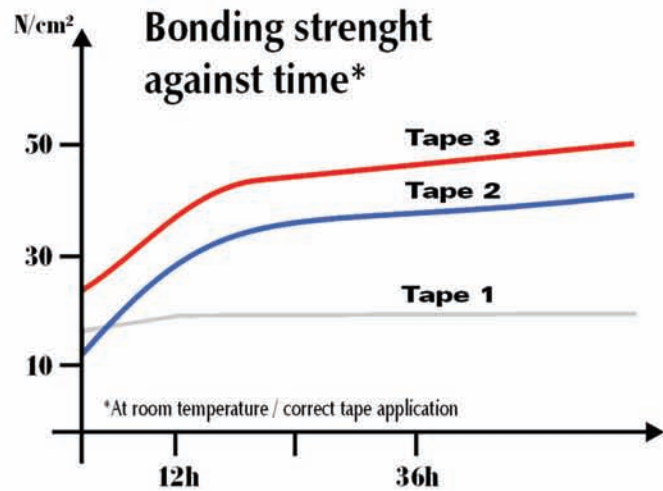
Item Nr.	Description
700 1053	ADHESIVE REMOVAL TOOL

A tool that removes adhesive weights without damaging the rim.

TECHNICAL DATA FOR ADHESIVE WEIGHT APPLICATION



When selecting an adhesive balance weight, the choice of the correct adhesive tape is of great importance. The selection must always bear in mind the purpose. Initial adhesive strength, removability, temperature stability and appearance should all be taken into consideration. With our strict attention to processing methods we can ensure that Hatco adhesive balance weights have a long lasting bonding strength.



WHITE TAPE / WHITE LINER (1)
Fast adhesion, difficult to remove
Adhesive thickness about 1.6 mm
Range of temperature: -40°C +90°C

BLACK TAPE / BLUE LINER (2)
Slower adhesion, complete 24 hours.
Can be removed completely
Adhesive thickness about 0.8 mm
Range of temperature: -40°C +150°C

WHITE TAPE / RED LINER (3)
Higher temperature (used for high speed cars)
Adhesive thickness about 0.8 mm
Range of temperature: -40°C +200°C

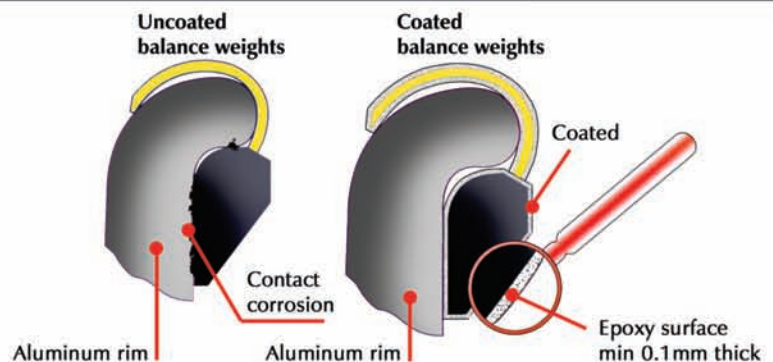
RIGHT APPLICATION OF ADHESIVE WEIGHTS



COATED BALANCE WEIGHTS

The application of a lead weight to an aluminum rim can cause an electrochemical reaction resulting in the corrosion of the rim.

In extreme cases this can result in metal fatigue. Coated balance weights prevent the lead and the aluminum from coming into contact and so protect the wheel from contact corrosion.



PACKAGING

Hatco uses high quality and strong packaging for all its heavy products which can be easily stacked on shelves without any damage. All individual boxes are labeled for clear identification.

All boxes are shrink-wrapped before being packed in master boxes. Hatco is one of the few companies that use this method as it provides a safety seal before opening and prevents air from reaching products, such as the uncoated lead weights, thus protecting the goods from any possible oxidation.



OUR LABEL

ZINC WEIGHTS PACKAGING



LEAD WEIGHTS PACKAGING



NUMERICAL INDEX

HATCO ITEMS PAGE

ZN01	3	FNC	21
ZN03	3	MC	21
ZN04	3	MCC	21
ZN05	3	AW	21
ZN060	4	AWC	21
ZN061	4	700 1050	22
ZN063	4	700 1051	22
ZN065	5	700 1052	22
ZN066	5	700 1053	22
ZN067	5		
ZN067R	5		
FE060	7		
FE060R	7		
01	9		
01P	9		
02	9		
03	9		
04	10		
04P	10		
05	10		
05P	10		
020	11		
020P	11		
021	11		
021P	11		
022	12		
022P	12		
023	12		
023P	12		
06	13		
060F	13		
063	13		
080P	13		
010	14		
011	14		
013	14		
030P	15		
031P	15		
070	15		
071	16		
081	16		
081P	16		
040	17		
040P	17		
041	17		
041P	17		
045	18		
059	18		
SW	20		
SWC	20		
IAW	20		
IAWC	20		

NOTES

A large rectangular area with rounded corners, outlined in orange, containing 25 horizontal blue lines for writing notes.

NOTES

Lined area for notes, consisting of multiple horizontal blue lines within a rounded rectangular orange border.

TERMS AND CONDITIONS OF SALE:**PRICES:**

All prices are Ex-Hatco factory and are subject to written confirmation by Hatco.

Placement of Orders:

Orders should be submitted to us in written. An order shall be deemed to have been accepted if it is acknowledged by us in writing.

The pro-forma invoice shall define the contents and scope of the order. Supplements, amendments or verbal collateral agreements require our written confirmation to be effective.

Prices as stated in the pro-forma invoice shall be valid for a delivery period up to 30 days.

No cancellation of orders are accepted after confirmation.

PAYMENTS:

Payments of all invoices must be paid full direct to HATCO without discount unless explicitly stipulated by Hatco.

In the case of credit sales, our company is expressly authorized to issue invoices to its client, who shall be obliged to bear all costs and interest resulting from possible refusal to its client.

DELAY IN PAYMENT:

Any merchandise remains the property of HATCO until entirely paid for.

Failure to pay an invoice on the due date entails immediate collectibility of all other invoices not yet due and suspension of any order not yet delivered and in addition application of a penal contractual and irreducible clause equivalent to 15% of the unpaid amount as well as penal interest on overdue payments at 12% per annum.

If the credit of the buyer deteriorates, we retain the right, even after partial dispatch of the goods, to require from the buyer such guarantees as we consider appropriate to ensure fulfillment of the buyer's commitments. In such instances where the buyer is unable to provide satisfactory guarantees we retain the right to cancel all or part of the order.

SHIPPING:

Goods are shipped at the buyer's risk. Hatco cannot accept any liability in case of loss, damage or delay during transportation. Insurance is compulsory. It is on buyer's expense.

DELIVERIES:

Periods stipulated for delivery or execution serve only as indication and are never obligatory. It shall not commence before the provision of required documents and before the receipt of order confirmation.

Delivery terms are approximate and barring accidents. Delays in delivery, due to any reason, give no right of claim for damages. We reserve the right to make partial shipments; only in few cases were some items are unavailable in stock on the date of shipment.

SCOPE AND PERFORMANCE OF DELIVERY:

Our delivery note shall define the scope of the delivery. One packing unit shall be the minimum order quantity.

Stock goods listed in catalogues shall be delivered in the specified packing units. We reserve the right to change the packing units. We also reserve the right to make technical changes to our products in line with ongoing research and development.

RESPONSIBILITY:

Hatco Ltd. has no responsibility, nor obligation for accidents to people or to goods deriving from the use of the instruments supplied.

RETURNED GOODS:

Returned goods will only be accepted if the product is: defective or incorrect, due to a shipping error.

Customers should check that the goods received match the original order specification and inform HATCO by writing of any discrepancies within 7 working days from receipt of goods. Written authorization must be obtained from HATCO before any goods can be returned. No credits or returns will be accepted on any HATCO product other than for the reasons listed above.

Once authorization has been granted, goods may be returned at HATCO's cost, only after transport costs have been agreed. HATCO accepts no responsibility for damage while the goods are in transit. All claims must be made directly to the transportation company in question.

Credits for returned goods will be issued within 30 working days of receipt of merchandise, once HATCO has confirmed the goods are either defective or incorrect.

REGISTERED OFFICE:

For any controversy or for the settlement of any lawsuit we only recognize the court of competence jurisdiction of Beirut, Lebanon.



We keep your wheels rolling

Seaside Highway - Autostrade Dora - **P.O.Box:** 80 - 269 Beirut - Lebanon

Tel: 00961 - 1 - 241 900/1 - **Fax:** 00961 - 1- 241990/1

Email: info@hatco.com.lb - www.hatco.com.lb